

MECHANICAL MOLDING PRESS



- Mechanical Press (Oilless system)
- Mechanical Transfer Multi Plunger
- Automatic Mold Cleaning System
- Soft Close Function
- Close Loop Function
- Applicable to any Brand of Auto Mold Chases (Hanmi, Fico, Daiichi....)
- Clean operating environment with mechanical press
- Compact Machine Footprint
- Multiple Temperature Control $\pm 2^{\circ}\text{C}$
- PC Based Press Control with Real-time Monitoring
- User-friendly Touch Screen LCD Monitor
- Molding Parameter Memory up to 100 Devices



Specifications

■ General Specifications

Description	Unit	HM-120-1M	HM-120-2M
Overall dimension(W×L×H)	mm	1007 × 1354 × 1973	
Die space	mm	410 × 500	
Day light	mm	628.5	628

■ Clamp Specifications

Clamp tonnage	Ton	120	120
Stroke	mm	150	150
Fast up	mm/ sec	100	100
Slow up/ return	mm/ sec	5~30	5~30
Fast return	mm/ sec	100	100

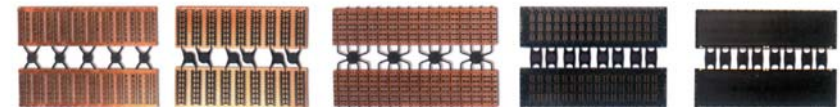
■ Transfer Specifications

Transfer tonnage	Ton	3.3	5.0
Stroke	mm	110	110
Fast up	mm/ sec	60	60
Slow up/ return	mm/ sec	0.3~20 / 0.2~20	0.3~20 / 0.2~20
Fast return	mm/ sec	60	60

Applicable to any type of automold chases
(Hanmi, Fico, Towa, Daiichi ...)

Real-time graphic display on touch-screen LCD monitor

Automatic Mold Cleaner (option)
 · Dual function cleaner with Brush&Air-Blower
 · Rubber sealed brushing system to prevent debris contamination



#532-2 Gajwa-Dong Seo-ku, Incheon, 404-250 Korea.
 Tel) +82-32-571-9100 (Main) Fax) +82-32-571-9101
<http://www.hanmisemi.com>